

A fluffy, light-colored dog, possibly a Maltese or similar breed, is sitting in a field of yellow flowers. The dog is looking directly at the camera with a calm expression. The background is a soft-focus field of similar flowers and greenery, suggesting an outdoor setting. The overall tone is warm and natural.

# **TV Shows with Animals**

# Instructions

- Do you remember watching television programs that had animal stars?
- Let's take a walk down memory lane; think about some well known animals that you saw on television. This presentation will remind us of those programs and the animals that starred in them.
- There will be trivia about these television shows that had animals as the main character from the 1950's and 60's.
- After you guess the TV show, scroll forward to the slide that shares the answer along with a link to the television show for you to view.
- There will also be discussion questions and facts related to the program.

# Trivia

This was a program about a smart and fearless collie who performs a series of heroic tasks for her human owners and friends.

For the first several years of the series, she lived on the family's farm before moving on to work with forest rangers in the wilderness.

Later in the series she ultimately settled in at Holden ranch, a ranch for troubled children.

- Can you guess the TV show?

# Answer

- *Lassie*
- Link to show:  
<https://www.youtube.com/watch?v=>



# Discussion Questions and Trivia

Did you watch the television series *Lassie*? What do you remember about the characters?

The television series was based from successful movies and became a beloved television series. During the 1950's, it was common for networks to bring entertainment to homes that had been successful on the big screen.

Did you know Lassie was a Lad? The original Lassie was a stunt double to fill in and do some of the scenes but after giving an impressive performance was hired for the job.

# Trivia

- This program is about an American black bear who befriends a family in the Everglades.
  - It was based on a book by Walt Morey.
  - It aired from 1967-69.
  - This series starred Dennis Weaver.
- 
- Can you guess the TV show?

# Answer

- *Gentle Ben*
- Link to show:  
<https://www.youtube.com/watch?v=zHt6tkUEhCI>



# Discussion Questions and some Facts

- Did you ever watch *Gentle Ben*?
- Would you want to be friends with a black bear.

Did you know that Bert Reynolds and Ron Howard starred in some episodes of Gentle Ben? However, it was Ron Howard's brother Clint that had the starring role in the series.

In the 1980's, there was a cartoon version of the television program. A cartoon version does seem more likely. However, in the 1967, Bruno played the role of Ben. Bruno lived from 1962-1981. Bruno also starred in the movie version, Gentle Giant. Bruno was the recipient of the PATSY Award. Bruno won 1st place for the movie work and 2nd place for the TV series.



# Trivia

This show is about a New York lawyer, Oliver Wendell Douglas, who longs for a simpler way of life. He buys a farm, sight unseen, and moves there to live off the land, with his wife, Lisa.

The show portrays life in a small town and the complications the Douglas family goes through living the country life in a farmhouse that requires a lot of work.

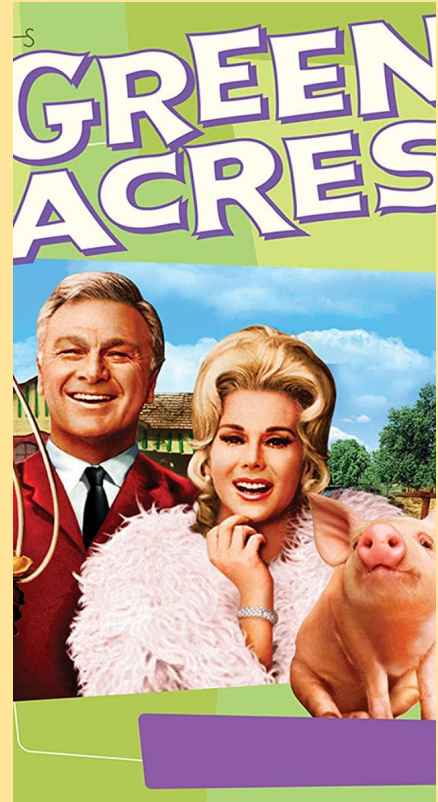
Can you guess the name of this television program?

# Answer

That's right it is Green Acres . What does Green Acres have to do animal stars? Do you remember the characters from Green Acres? Let's talk about Arnold Ziffel. Who is Arnold? Arnold is the son of farmer Fred Ziffel and his wife Doris.

Arnold is a pig. Do you remember his role on Green Acres?

<https://youtu.be/XM4eBufL8Qk>



# Discussion Questions and Facts

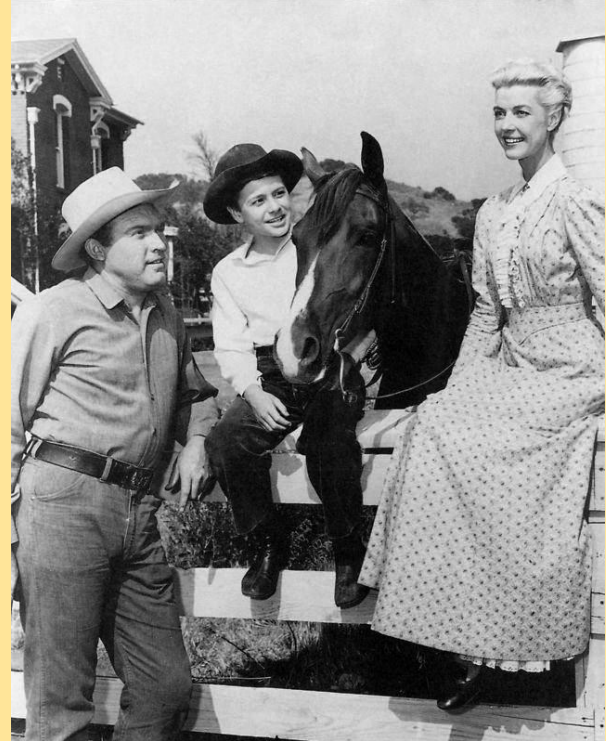
- Green Acres was on the air for 6 seasons. It was a spin off of Petticoat Junction which was a spin off of The Beverly Hillbillies. It first aired on television on September 15, 1965. There were 170 episodes of Green Acres with the final show airing on April 27, 1971.
- Some characters of Green Acres would show up on other shows linked to Green Acres.
- Did you watch those programs on tv? Did you know they were related to one another?
- Who was your favorite character on Green Acres. Do you remember the character Arnold the Pig?

# Trivia

- A western TV series about the adventures of a young boy and his horse.
  - The series took place in Wyoming.
  - The show was on television 1956-1957 and aired at 7:30pm on Friday evenings.
- 
- Can you guess the TV show?

# Answer

- *My Friend Flicka*
- Link to show:  
<https://www.youtube.com/watch?v=f0TcM46oICQ>



# Discussion Questions and Facts

- Did you ever watch *My Friend Flicka*?

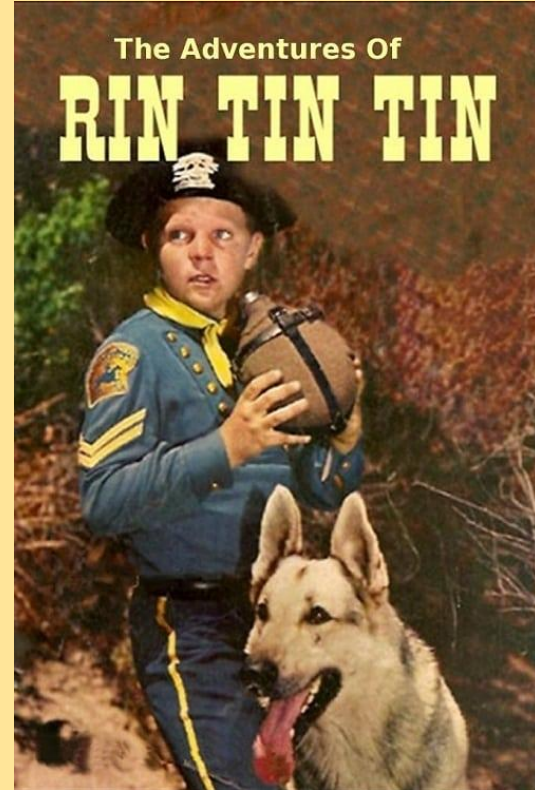
Did you know this television program was based on the film trilogy which originated from the book series written by Mary O'Hara. The book was written in 1941, the film version came out in 1943. The television series failed and only had a run for 1 year. The program was shown as reruns in 1959 and 1966. Disney also reran the series in the 1980's.

# Trivia

- An American children's television program, that began in October 1954 and ended in May 1959,
  - It starred a boy orphaned in an Indian raid, who was being raised by the soldiers at a US Cavalry post known as Fort Apache.
  - He, and his German shepherd dog, helped the soldiers to establish order in the American West.
- 
- Can you guess the TV show?

# Answer

- *The Adventures of Rin Tin Tin*
- Link to show:  
<https://www.youtube.com/watch?v=ZnclUG-0SQ>





# Discussion Questions and Facts

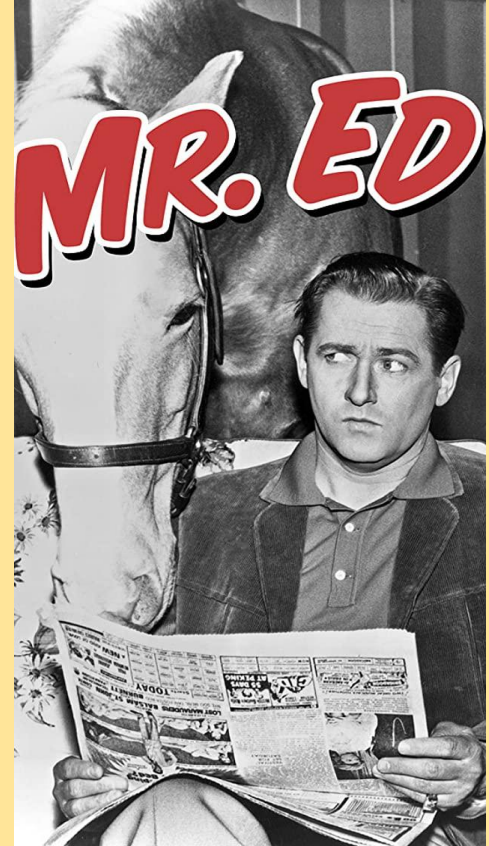
- Did you ever watch *The Adventures of Rin Tin Tin*?
- Did you know the character Rin Tin Tin is based on a true story? Rin Tin Tin is one of the most recognized and famous German Shepherds. Rin Tin Tin was rescued in 1918 during WWI by Corporal Lee Duncan. Rin Tin Tin is one of the puppies Corporal Duncan found in a ruined building. Rin Tin Tin was trained by the American Soldier and was able to jump 11 feet 9 inches. Rin Tin Tin was the highest paid animal actor and earned \$6,000 a week and starred in 26 movies. If this salary was paid today, it would equal 78,000 a week. Children of the original Rin Tin Tin were trained by Lee Duncan to be in films. Rin Tin Tin III was also trained to assist the military during WWII. Rin Tin Tin IV was trained to be in starring roles and was supposed to be in *The Adventures of Rin Tin Tin* but had to be replaced due to poor performance.

# Trivia

- An American television comedy that aired from 1961-1966.
- It is about the misadventures of a wisecracking talking horse and his human owner.
- The horse causes mischief for which his owner gets blamed for.
  
- Can you guess the TV show?

# Answer

- *Mister Ed*
- Link to show:  
<https://www.youtube.com/watch?v=3cl-LXMyDo>



# Discussion Questions and Facts

Did you watch *Mister Ed*?

Did you know Mr. Ed's real name was Bamboo Harvester? Mr. Ed could not actually talk, although, it really looked like he was talking..

He was just trained to look like he could. The voice of Mr. Ed was really Allan "Rocky" Lane.

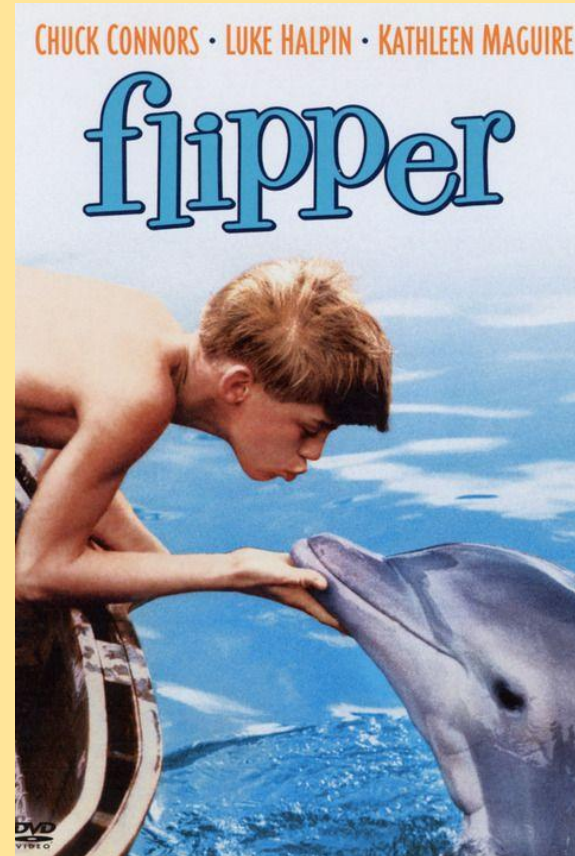
Did you know that George Burns produced the pilot of Mr. Ed. for \$70,000.00 but was an instant success and picked up by CBS after 1 year.

# Trivia

- An American television program first broadcast from 1964 to 1967.
  - It is about two children find adventure with their pet dolphin.
  - The show has been dubbed an "Aquatic Lassie".
- 
- Can you guess the TV show?

# Answer

- *Flipper*
- Link to show:  
<https://www.youtube.com/watch?v=y6PqrTZsho0>



# Discussion Questions and Facts

- Did you ever watch *Flipper*?

Did you know that the voice of Flipper came from the sound of a Kookaburra Bird.

[https://youtu.be/Fc\\_-icFHwQo](https://youtu.be/Fc_-icFHwQo) What do you think? Does it sound like Flipper?

The creator of the Black Lagoon was also the one who created Flipper.

The dolphins that played in the series Flipper were all females. The first dolphin was named Susie and there were several other dolphins during the span of the series; seven to be exact. Female dolphins are less aggressive and that is why they used them in the program. The last dolphin that played the role of Flipper was named Bebe and was born in 1956 and died in 1997. She was 40.

# Resources

- [https://en.wikipedia.org/wiki/Green\\_Acres](https://en.wikipedia.org/wiki/Green_Acres)
- [https://en.wikipedia.org/wiki/Lassie\\_\(1954\\_TV\\_series\)](https://en.wikipedia.org/wiki/Lassie_(1954_TV_series))
- <http://mercurie.blogspot.com/2016/08/animal-shows-of-sixties.html>
- [https://en.wikipedia.org/wiki/My\\_Friend\\_Flicka\\_\(TV\\_series\)](https://en.wikipedia.org/wiki/My_Friend_Flicka_(TV_series))
- [https://en.wikipedia.org/wiki/The\\_Adventures\\_of\\_Rin\\_Tin\\_Tin](https://en.wikipedia.org/wiki/The_Adventures_of_Rin_Tin_Tin)
- [https://en.wikipedia.org/wiki/Mister\\_Ed](https://en.wikipedia.org/wiki/Mister_Ed)
- <https://www.imdb.com/title/tt0054557/plotsummary>
- <https://www.imdb.com/title/tt0061255/>
- <https://www.wideopencountry.com/mister-ed-the-talking-horse-10-facts-you-never-knew/>